

Urban Nomad

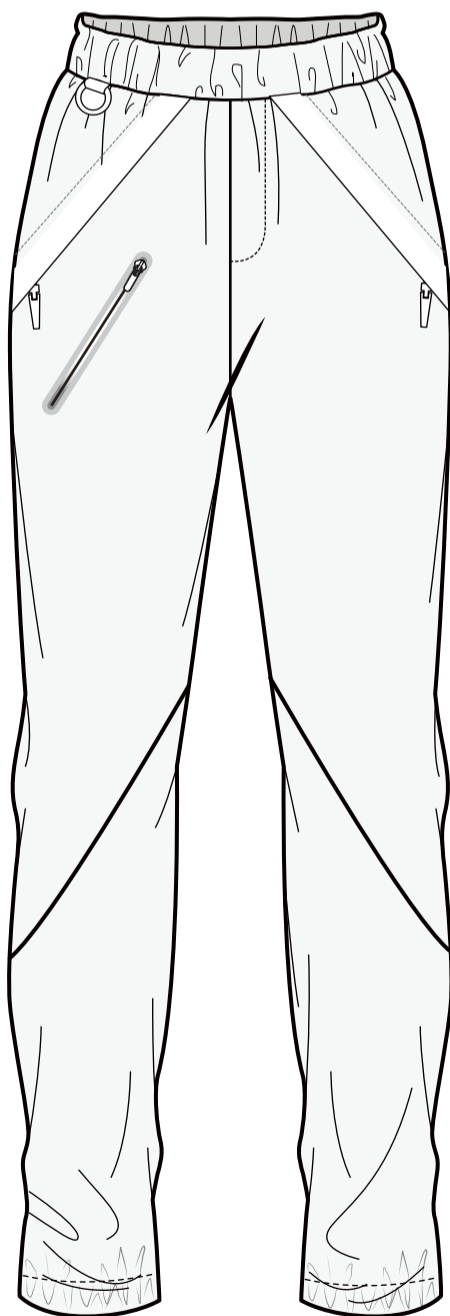


- A new generation of worker/ travellers.
- They transplant themselves to new cities across the globe
- A story of functionality
- Pieces and items should be multifunctional
- Workwear inspired but transformed
- Ironically "just looking" good is not enough
- Durability
- Functionality
- Ease and comfort
- Light weight
- Non wrinkle, non iron
- Movie reference: KINGSMMEN





01
bPWH92 2L



02
TZD072-QD

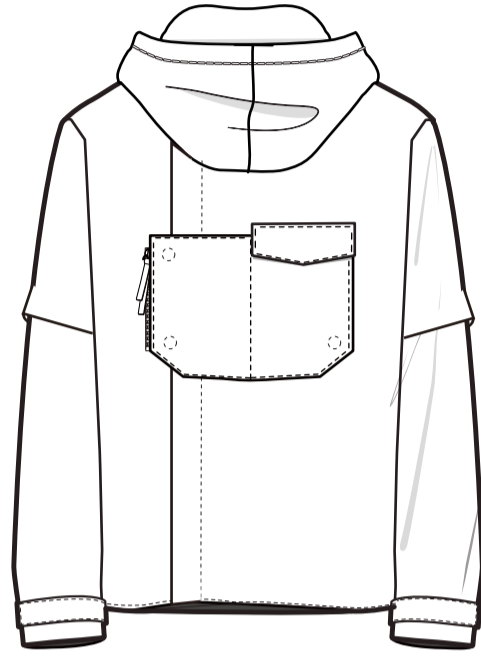
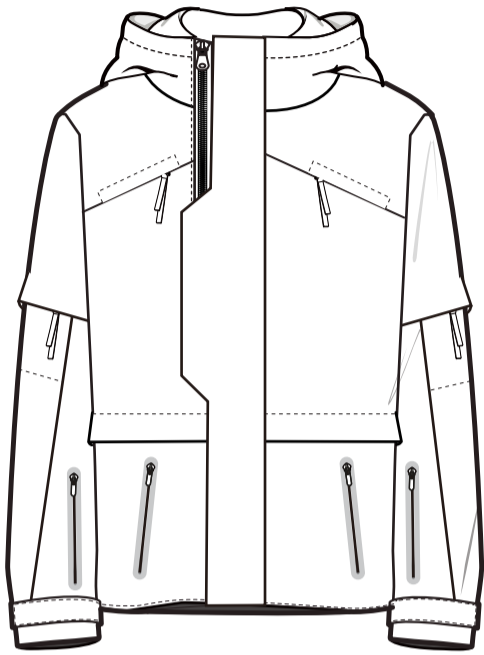
GREEN SCENE



- Aesthetically, this story is inspired by military
- Military details are refined to fit into the "Less is more" thought process
- Silhouettes and shapes are familiar yet functionality of details are toned down
- Sustainable and eco-friendly fabrication are introduced to coincide with being more conscious and friendly to our earth
- Perhaps fusing fabrics that will be BIO-DEGRADABLE
- Utilitarian details are still welcome and celebrated
- Movie reference: ANNIHILATION



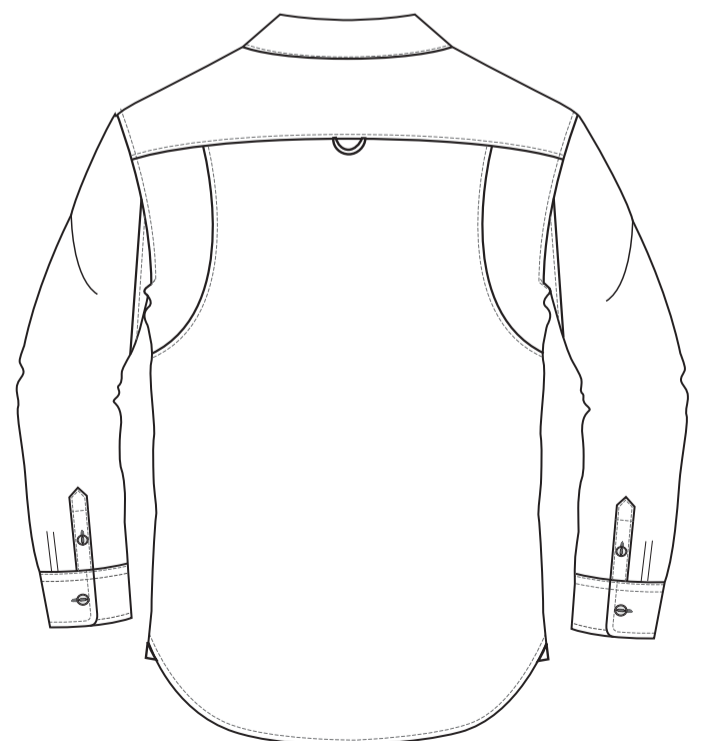
Style plan



03
rececye fabric
YKRE21



04
Canvas
+
Sheen Fabric
T-4116-154

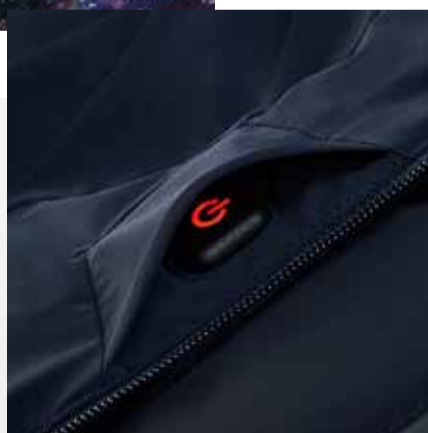
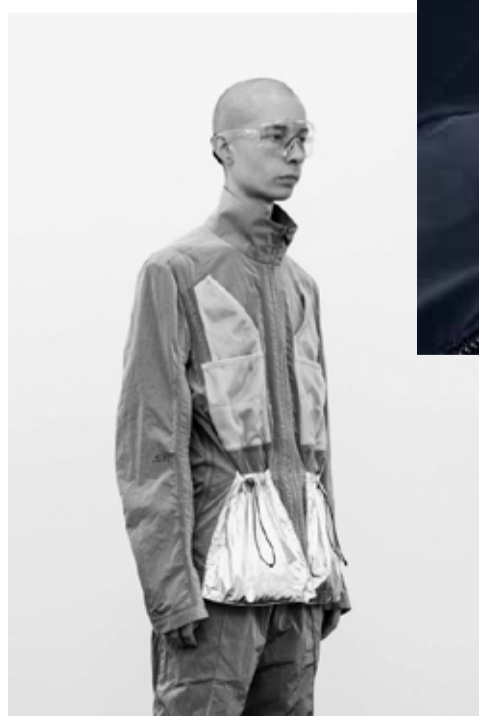
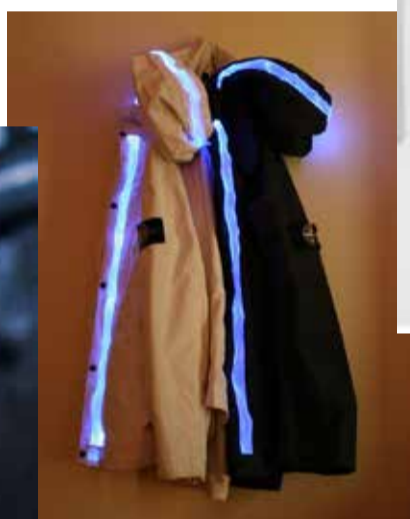


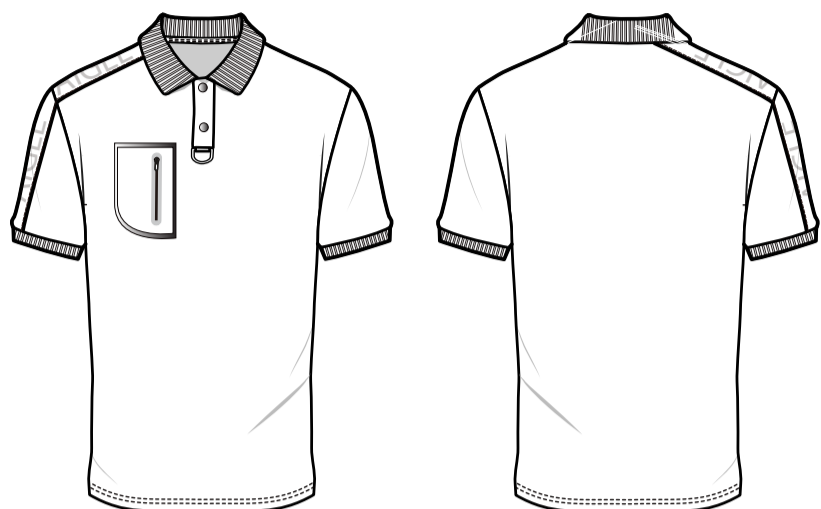
05
14133S

TECHSTYLOGY

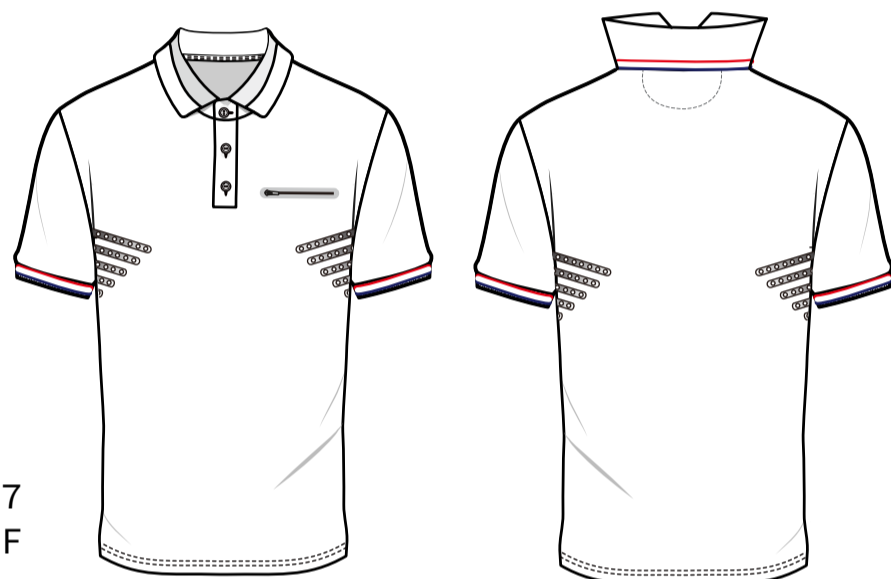


- Story where technology leads the way
- Whether it can be in the cut, fabrication, trim, details or finishing this is where you will find it
- Silhouette wise this story will be most directional
- Active tailoring with ultra clean lines
- Data shirt with snap plackets
- Cool wools that have been "hybrinated" to give a more modern feel
- Ironically styles that have been referenced in the original BLADE RUNNER with HARRISON FORD was made in 1982, and it was talking about the future which is NOW
- Movie reference: BLADE RUNNER 2049

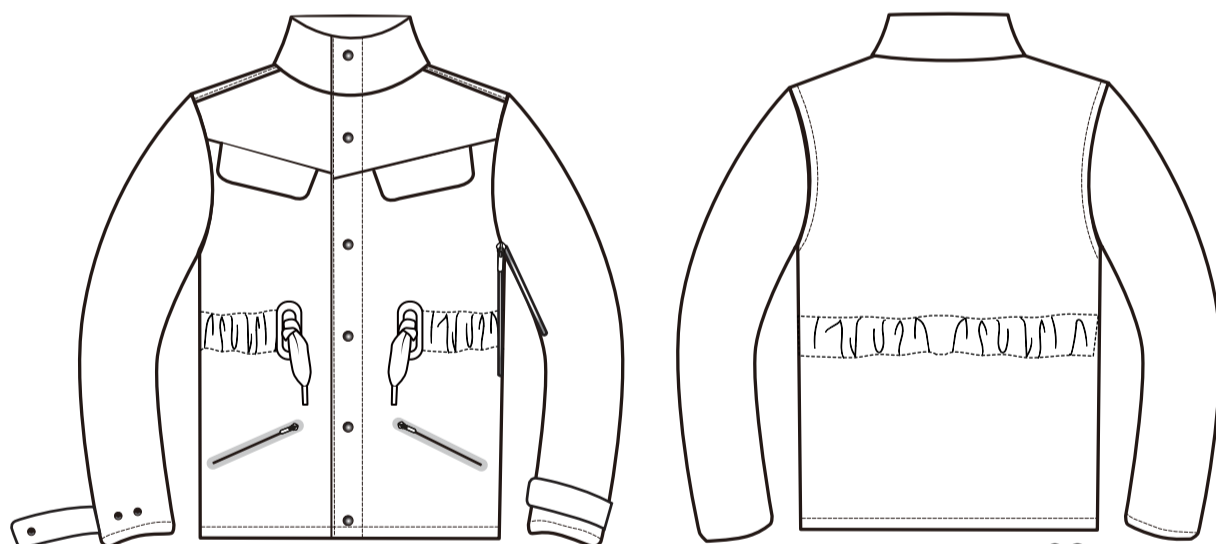




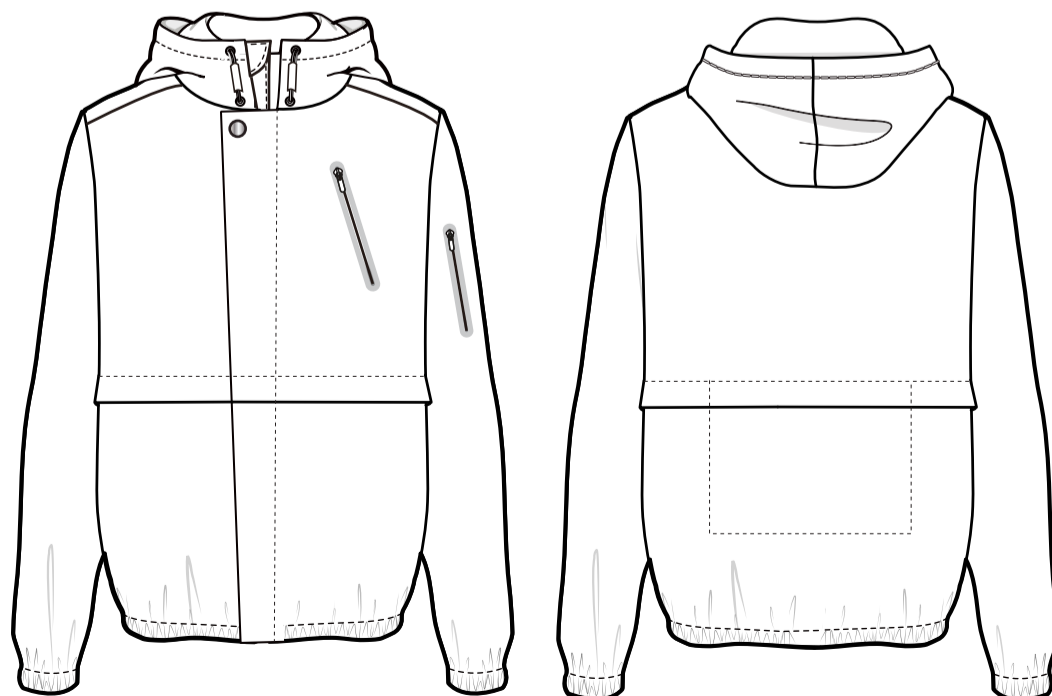
06
CVC-215PIQF



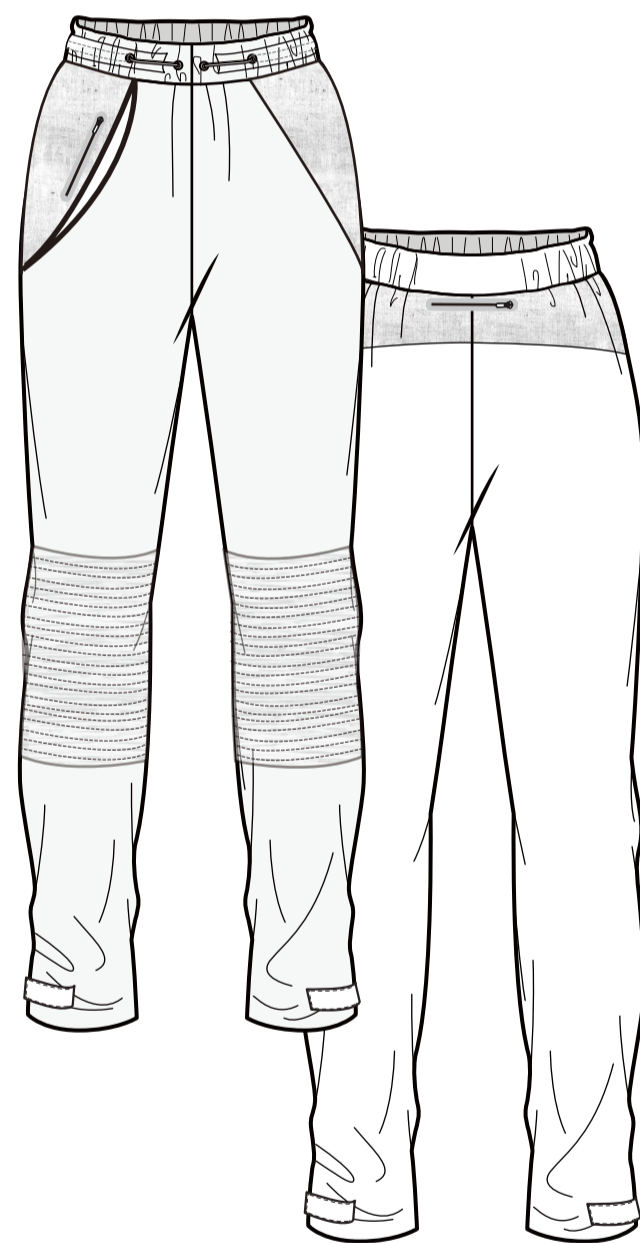
07
CVC-215PIQF



08
SPLTOXK/ TR 3L



09
water repellent fabric
T-4116-154



10
TZD072-QD
+
ottoman knit fabric